

# DNA Methylation at Stress-Related Genes is Associated With Exposure to Early Life Institutionalization

Amy L. Non,<sup>1</sup> Brittany M. Hollister,<sup>2</sup> Kathryn L. Humphreys,<sup>3</sup> Ainash Childebayeva,<sup>2</sup> Kyle Esteves,<sup>4</sup> Charles H. Zeanah,<sup>4</sup> Nathan A. Fox,<sup>5</sup> Charles A. Nelson,<sup>6,7</sup> and Stacy S. Drury<sup>4\*</sup>

<sup>1</sup>Department of Anthropology, University of California, San Diego, La Jolla, CA

<sup>2</sup>Vanderbilt Genetics Institute, Vanderbilt University, Nashville, TN

<sup>3</sup>Department of Psychology, Stanford University, Palo Alto, CA

<sup>4</sup>Department of Psychiatry and Behavioral Sciences, Tulane University School of Medicine, New Orleans, LA

<sup>5</sup>Department of Human Development and Quantitative Methodology, University of Maryland, College Park, MD

<sup>6</sup>Boston Children's Hospital, Boston, MA

<sup>7</sup>Harvard Graduate School of Education, Cambridge, MA

**KEY WORDS** epigenetics; early life adversity; stress

## ABSTRACT

**Objectives:** Differences in DNA methylation have been associated with early life adversity, suggesting that alterations in methylation function as one pathway through which adverse early environments are biologically embedded. This study examined associations between exposure to institutional care, quantified as the proportion of time in institutional care at specified follow-up assessment ages, and DNA methylation status in two stress-related genes: *FKBP5* and *SLC6A4*.

**Materials and Methods:** We analyzed data from the Bucharest Early Intervention Project, which is a prospective study in which children reared in institutional settings were randomly assigned (mean age 22 months) to either newly created foster care or care as usual (to remain in their current placement) and prospectively followed. A group of children from the same geographic area, with no history of institutionalized caregiving, were also recruited. DNA methylation status was determined in DNA extracted from buccal epithelial cells of children at age 12.

**Results:** An inverse association was identified such that more time spent in institutional care was associated with lower DNA methylation at specific CpG sites within both genes.

**Discussion:** These results suggest a lasting impact of early severe social deprivation on methylation patterns in these genes, and contribute to a growing literature linking early adversity and epigenetic variation in children. *Am J Phys Anthropol* 161:84–93, 2016. © 2016 Wiley Periodicals, Inc.

Exposure to adverse early life experiences can have deleterious effects on child development and functioning (Bateson et al., 2004), as well as a broad range of long-term physical and mental health consequences, including cardiovascular disease (Galobardes et al., 2006), depression, and anxiety (Phillips et al., 2005). A number of biological pathways are suggested mediators linking adverse early experiences and poor health and development. Recent studies have documented associations between early adversity with biological markers including altered cortisol regulation (Struber et al., 2014), cytokines (Slopen et al., 2012), and telomeres, a cellular indicator of stress and aging (Drury et al., 2012b).

In addition to these pathways, DNA methylation is an epigenetic mechanism that has been associated with early life adversity and may facilitate the biological embedding of early life experience (Hertzman, 1999; Foley et al. 2009; Kuzawa and Sweet, 2009). DNA methylation usually refers to the methylation of cytosine guanine dinucleotides (i.e., CpG sites) in the DNA. Alterations in DNA methylation have been associated with adverse early caregiving environments across several species. One example is that low licking and grooming behavior by rat mothers in the first week of life has been associated with increased DNA methylation in the hippocampus of the offspring in the promoter region of *NR3C1*, a gene that encodes the glucocorticoid receptor

(Weaver et al., 2004), and at the *GAD1* promoter, a gene that influences the development of the GABA system (Zhang et al., 2010). There is now extensive evidence in both animals and humans linking early life stress with altered DNA methylation across various brain regions and in peripheral tissues across many stress-response

Additional Supporting Information may be found in the online version of this article.

Grant sponsor: Robert Wood Johnson Health and Society Scholars Program, Harvard School of Public Health (A.L.N.), Vanderbilt Undergraduate Supervision Research Grant, the John D. and Catherine T. MacArthur Foundation (Research Network on Early Experience and Brain Development, CAN), the Binder Family Foundation (CAN), NIMH R01 MH MH-10-010 (CAN), and R21 MH094688-01 (SSD).

\*Correspondence to: S.S. Drury; 1430 Tulane Ave, #8055, New Orleans, LA 70112, USA. E-mail: sdrury@tulane.edu

Received 16 January 2016; revised 24 April 2016; accepted 27 April 2016

DOI: 10.1002/ajpa.23010  
Published online 24 May 2016 in Wiley Online Library (wileyonlinelibrary.com).

related genes (Turecki and Meaney, 2014; Jawahar et al., 2015).

One gene with established associations with maternal care, early life adversity, and long-term child developmental outcomes is *SLC6A4*, the gene that encodes the serotonin transporter (5-HTT). Serotonin (5-HT) is involved in the development of the central nervous system, including multiple pathways that have been implicated in neuropsychiatric disorders (Jans et al., 2007). The 5HTT is a key regulator of 5HT levels and a substantial body of literature has examined genetic and stress-related alterations in *SLC6A4* in association with early life adversity and long-term health outcomes (Dayer, 2014). For example, polymorphic variants and altered DNA methylation at *SLC6A4* may moderate an individual's response to adversity and contribute to altered cortisol stress responses (Ouellet-Morin et al., 2013; Buchmann et al., 2014), and the development of psychopathology (Karg et al., 2011; Bogdan et al., 2014). Both adverse prenatal and early childhood exposures have been linked to altered DNA methylation of *SLC6A4* in animal models and humans. For example, in macaques, early maternal separation has been associated with increased methylation of *SLC6A4* in blood cells, lower 5HTT expression, and increased stress reactivity (Kinnally et al., 2010). In humans, studies have similarly shown increased methylation in response to early life stress; e.g. higher levels of *SLC6A4* methylation have been found in adults exposed to stressful or traumatic events in childhood or adolescence (Beach et al., 2010, 2011; Duman and Canli, 2015; van der Knaap et al., 2015). Additionally, a positive association has been identified between early and recent life stress with increased DNA methylation and altered gene expression in adult men (ages 18-77), in interaction with a polymorphism of *SLC6A4* (Duman and Canli, 2015). In contrast to these studies, increased maternal depressed mood during the 2<sup>nd</sup> trimester of pregnancy was associated with *decreased* methylation in the promoter region of *SLC6A4* in both maternal and neonatal whole blood samples (Devlin et al., 2010). Taken together, these studies indicate that adverse prenatal and early life exposures have been associated with both increased and decreased DNA methylation of *SLC6A4*, and altered expression of 5HTT.

FK506 Binding protein 5 (FKBP5) is a member of the glucocorticoid receptor complex, which facilitates termination of the cortisol stress response by altering the sensitivity to glucocorticoid receptor negative feedback (Binder, 2009). Specifically, elevated FKBP5 gene expression reduces the ability of the GR complex to translocate to the nucleus, decreasing transcriptional activation, and subsequently down regulating expression changes initially triggered by elevated glucocorticoids. Similar to that seen with *SCL6A4*, alterations in *FKBP5* methylation, gene expression, and cortisol levels, have been reported in relation to adverse early life exposures. Lower DNA methylation at intron 7 of *FKBP5* was found in the blood of adults exposed to childhood trauma relative to those unexposed, in those carrying a risk allele at this gene (Klengel et al., 2013). Similarly, in a study of young impoverished children (aged 3-5), those who experienced maltreatment showed significantly lower methylation at two CpG sites in this same gene region (Tyrka et al., 2015). In contrast, *increased* DNA methylation at intron 7 has been observed at multiple CpG sites in *FKBP5* in Holocaust survivors, although lower methylation

was observed in their offspring, suggesting an inter-generational biological accommodation of trauma at this gene (Yehuda et al., 2015). DNA methylation at sites outside of intron 7 were also associated, in a genotype-dependent manner, with a history of physical and sexual abuse in the offspring of Holocaust survivors; methylation levels in this gene were also associated with waking cortisol levels (Yehuda et al., 2015).

Institutional care represents an extreme form of early life adversity characterized by low-quality caregiving with little individual attention that has been associated with lasting negative effects on social-emotional development, mental health, cognitive function, and neural development (Nelson et al., 2007; Pollak et al., 2010; Fox et al., 2011; McLaughlin et al., 2011; Nelson et al., 2014). Physiologically, institutional care has been linked to blunted cortisol reactivity and a less steep diurnal cortisol decline, when compared to children who entered foster care at an earlier age or were adopted (Koss et al., 2014; McLaughlin et al., 2015). While some deficits have been found to be mitigated by removal from institutional care, the cumulative exposure to institutional rearing, as well as the age at which a child is removed from institutional care, have been found to significantly moderate recovery (Nelson et al., 2014).

To our knowledge, only one study to date has investigated associations between institutional care and DNA methylation (Naumova et al., 2012). This study assayed DNA methylation in lymphocytes across 27,000 CpG sites in 14 individuals in institutional care compared to 14 raised by biological parents. They identified small but significant differences (mostly increased methylation) at 914 sites between the two groups of children. Although intriguing, the limited sample size, wide variation in exposure to institutional care, and limitations of the selected 27k Illumina microarray which only examines, on average, 1-2 CpG sites per gene, indicate that replication and examination of gene-specific methylation in larger samples sizes is needed.

The Bucharest Early Intervention Project (BEIP) is the only randomized controlled trial of foster care compared to care as usual for children abandoned and placed in institutions at birth or early in life. This ongoing longitudinal study began when children were on average 22 months of age. Children living for more than half of their lives in one of six orphanages for young children in Bucharest were randomized to a newly created foster care program or to continued institutional care. A group of children without exposure to institutional care were recruited from the same maternity hospitals at baseline as the children raised in institutions (Zeanah et al., 2003) and from the same public schools attended by institution reared children at the age 8 assessment (Fox et al., 2011). The randomized design, with variable amount of cumulative exposure to institutional care, provides a unique opportunity for the exploration of the association between a well-characterized exposure to severe psychosocial deprivation and DNA methylation. Here, we analyzed the associations between the proportion of a child's life spent in institutional care and DNA methylation in buccal cells at two well-studied stress-related genes, *SLC6A4* and *FKBP5*. We specifically chose to investigate the promoter region of *SLC6A4* and an enhancer region of *FKBP5*, because of the extant literature indicating altered methylation at these sites as a consequence of negative early adverse experiences as well as their established linked to cortisol function

(Devlin et al., 2010; Klengel et al., 2013), specifically found to be altered in this cohort (Devlin et al., 2010; Klengel et al., 2013; McLaughlin et al., 2015). Based on these studies, we hypothesized that DNA methylation would vary based on the cumulative exposure an individual child had to institutional caregiving. Further, we hypothesized that the proportion of time in institutional care measured earlier in development would be a stronger predictor of methylation at age 12 relative to later time points in childhood.

## MATERIALS AND METHODS

### Study population

The original study sample was 136 children, recruited between the ages of 6 and 31 months, and assessed on a number of measures (for sample details see Zeanah et al., 2003; Nelson et al., 2014). Following baseline assessment of the ever institutionalized group of children (EIG), half of the children ( $n = 68$ ) were randomly assigned to care as usual (Care as Usual Group; CAUG), and the other half ( $n = 68$ ) were placed in high-quality foster care (Foster Care Group; FCG). Children have been prospectively followed and assessed with a range of biological, physical and social-emotional and cognitive measures at 30, 42, and 54 months and 8 and 12 years of age. An additional group of 72 children who had never spent time in an institution (Never Institutionalized Group; NIG) were recruited from the same maternity hospitals as the institutionalized cohort as well as area elementary schools (Nelson et al., 2014). Following randomization into foster care, the local child protection authorities in Bucharest made all decisions regarding placement of the children, in accordance with Romanian law. Details of the foster care program created for this project, the follow-up, and ethical considerations are described elsewhere (Smyke et al., 2010; Zeanah et al., 2012; Nelson et al., 2014). As a result of the BEIP study design, there was significant variation in the total amount of exposure to institutional care. The current assessment was conducted on DNA extracted from buccal samples collected at age 12 from 127 individuals. Among these, 121 samples had sufficient DNA for methylation assays, and 117 samples produced reliable DNA methylation data (112 for *SLC6A4* from 106 for *FKBP5*). The final set of analyzed samples came from 82 children who had ever spent time in an institution and 35 children who had never been institutionalized.

The study protocol was approved by the University Institutional Review Boards (IRBs) of Boston Children's Hospital, the University of Maryland, Tulane University, University of Bucharest, and Vanderbilt University. As dictated by Romanian law, consent was given by the local Commission on Child Protection for each child participant who lived in their sector of Bucharest.

### Measures

**Proportion of time in institutional care.** Detailed life history data have been collected longitudinally since study initiation. A measure of proportion of time spent in institutional care was calculated based on the cumulative number of days the child has resided in institutional care. This measure was calculated at each assessment time point for each child individually. Thus, the measure referenced throughout the paper as "proportion of time in institutional care" represents the

percent of a child's life up to a particular age that the child spent in institutional care. Because of the range of age at placement into foster care and variation in the age at which children initially entered institutional care, this variable is most reflective of cumulative exposure to institutional rearing. This measure was calculated at baseline, 30, 42, and 54 months, as well as 8 and 12 years. Proportion of time in institutional care for the never institutionalized children was set at 0 for all time points.

**DNA methylation.** Genomic DNA was extracted from buccal swabs collected from children at age 12 using standard protocols (Qiagen, Valencia, CA). The level of DNA methylation was assessed via pyrosequencing at 6 CpG sites within the promoter region of the *SLC6A4* gene and at 2 CpG sites within intron 7 of the *FKBP5* gene. All CpG sites were located within or very near to transcription factor binding sites, as annotated by Encode chip-seq experiments in the UCSC Genome Browser. See Supporting Information Figure 1 for locations of CpG sites assayed and their relation to transcription factor binding sites in each gene.

In brief, 150 ng of DNA from each sample was bisulfite converted in duplicate using the EZ DNA Methylation Gold Kit (Zymo Research, CA), according to manufacturer's protocol. Bisulfite-converted DNA was mixed with 0.2  $\mu$ M of each primer and amplified using the HotstarTaq plus Master Mix (Qiagen, CA). A bisulfite conversion check was included in each assay to verify full conversion of the DNA. Methylation levels for all CpG sites were assessed using the Pyromark Q24 pyrosequencer. The assay was validated with a methylation scale (0%, 20%, 40%, 60%, >80%) in duplicate created from whole genome amplified DNA (representing 0% methylation), and DNA treated with CpG methyltransferase *M.SssI* (representing >80% methylation). For each sample, PCRs were performed on each of the duplicate bisulfite treatments using the following protocol for both genes: one cycle of 95°C for 5 min, 45 cycles of 94°C for 1 min, 58°C for 1 min, 72°C for 1 min, and 72°C for 10 min. Primer information for each gene is provided in Supporting Information Table 1. If the difference between two replicates exceeded two standard deviations (SDs) of the variation in the entire study population, a third bisulfite treatment was tested and the average of the two closest results was used. After a third bisulfite treatment was conducted on eight samples, the SD for all the technical replicates for *SLC6A4* ranged from 1.1 to 3.1 across the six tested sites, and from 4.8 to 5.9 for the two tested sites in *FKBP5*. The mean difference between technical replicates in this study was 2–3% across both genes. Of the 121 samples assayed for methylation, four samples failed to amplify for either gene. Lab technicians were blind to sample group assignment (i.e., FCG, CAUG, NIG).

**Covariates.** Additional variables controlled for in the regression models included age at time of buccal swab collection, sex, ethnicity (Romanian versus other) as reported by Romanian research staff involved in the study, and pubertal status as measured by Tanner Stage quintiles at age 12 (Marshall and Tanner, 1969; Marshall and Tanner, 1970).

**Statistical analyses.** Methylation scores were examined and outliers were excluded for specific sites (ranging from 0 to 3 excluded per each site), as determined by scores that fell beyond three standard deviations from the mean. Next, bivariate crude correlations were analyzed between each CpG site in each gene with the proportion of time in institutional care. Given multiple comparisons, we adjusted for the number of sites tested within each gene using a Bonferroni multiple testing correction (e.g.,  $\alpha=.05/6$ ;  $P=.008$  for *SLC6A4*;  $\alpha=.05/2$ ;  $P=.025$  for *FKBP5*). For bivariate associations that remained significant following this adjustment, a series of hierarchical linear regression analyses, adjusting for demographic variables (i.e., age, sex, ethnicity, and pubertal stage), were then conducted. Demographic variables were included in Step 1, and proportion of time in institutional care was additionally included in Step 2, in the prediction of DNA methylation level. All methylation sites were examined for normality and a visual inspection found each to be within normal limits. In addition, regression residuals were plotted and visually inspected and were normally distributed.

In sensitivity analyses, children who had never spent time in an institution (NIG) were excluded and only those in the EIG ( $n = 82$ ) were analyzed in relation to

proportion of time in institutional care. Pairwise correlations and linear regressions including the same covariates as in the primary analyses were conducted on this subset of the sample in the same manner as in the total sample.

## RESULTS

### Population characteristics

Sample characteristics across the EIG and NIG groups of children are presented in Table 1. The mean age at which the DNA was collected for methylation analyses in the total sample was 12.5 ( $SD = 0.4$ ) years, 51% of the sample was male, and 63% identified as Romanian in ethnicity, with the remainder identified as Roma (27%) or other (9%). More of the children in the EIG relative to NIG were identified as Roma, but no other demographic differences between groups were detected.

### Associations between institutionalization history and DNA methylation at *SLC6A4*

Proportion of time in institutional care, measured at each time point, was found to be significantly correlated with DNA methylation at two CpG sites out of six tested in the promoter region of *SLC6A4* (Table 2). Specifically, CpG5 was negatively correlated with proportion of time in institutional care at five of the six time points, and CpG6 was negatively correlated with proportion of time in institutional care across all measured time points. After Bonferroni correction for all CpG sites tested within this gene (threshold at  $P=.008$ ), CpG5 remained significantly associated with proportion of time in institutional care at 30 and 42 months; CpG6 remained significantly associated with proportion of time in institutional care at 30, 42, and 54 months.

### Associations between institutionalization history and DNA methylation at *FKBP5*

A significant negative correlation was found between CpG1 in *FKBP5* with proportion of time in institutional care measured at baseline (Table 2), though this association did not remain significant after adjusting for Bonferroni correction (threshold at  $P=.025$ ).

### Associations within ever institutionalized youth between institutionalization amount and DNA methylation at *SLC6A4* and *FKBP5*

In order to determine if the relative amount of exposure to institutional caregiving was associated with DNA methylation, we subsequently conducted correlation

TABLE 1. Sample characteristics across study groups of never and ever institutionalized children

	Never Institutionalized ( $n = 35$ )	Ever Institutionalized ( $n = 82$ )
Sex, $n$ (%)		
Male	17 (49%)	43 (52%)
Female	18 (51%)	39 (48%)
Race/Ethnicity <sup>a</sup> , $n$ (%)		
Romanian	33 (94%)	41 (50%)
Roma	2 (6%)	30 (37%)
Other	0 (0%)	11 (13%)
Proportion of time in institutional care <sup>a</sup> , mean (SD)		
Baseline	0 (0)	0.87 (0.19)
30 months	0 (0)	0.78 (0.20)
42 months	0 (0)	0.65 (0.22)
54 months	0 (0)	0.57 (0.25)
8 years	0 (0)	0.40 (0.26)
12 years	0 (0)	0.32 (0.27)

<sup>a</sup>Indicates significant differences between groups at  $P < 0.05$  in chi-square tests. The variable "proportion of time in institutional care" represents the proportion of a child's life up to a particular age that was spent in institutional care; the mean and SD of this variable across children is shown at each time point.

TABLE 2. Correlation matrix for methylation sites and percent time institutionalized in the full sample

Percent time in institutional care	<i>SLC6A4</i> Correlations						<i>FKBP5</i> Correlations	
	CpG1	CpG2	CpG3	CpG4	CpG5	CpG6	CpG1	CpG2
Baseline	-0.09	-0.08	0.07	-0.08	-0.23*	-0.22*	-0.21*	-0.10
30 months	-0.15	-0.12	0.05	-0.10	-0.29**	-0.30***	-0.18†	-0.07
42 months	-0.15	-0.08	0.06	-0.04	-0.25**	-0.29**	-0.13	-0.04
54 months	-0.15	-0.05	0.05	-0.01	-0.22*	-0.26**	-0.11	-0.03
8 years	-0.11	0.01	0.03	0.01	-0.19*	-0.23*	-0.09	0.01
12 years	-0.13	0.01	0.05	0.01	-0.17†	-0.22*	-0.08	0.03
Mean (SD)	3.49 (1.54)	1.48 (0.68)	3.25 (1.23)	2.58 (1.09)	1.60 (0.81)	6.02 (1.71)	91.81 (3.58)	84.11 (5.36)
Range	0.71-7.46	0.28-3.67	1.12-7.15	0.37-6.10	0.00-3.64	2.12-11.07	81.47-100.00	69.70-97.50

Note. † $P < .10$ . \* $P < .05$ . \*\* $P < .01$ . \*\*\* $P < .001$ .

TABLE 3. Correlation matrix for methylation sites and percent time institutionalized in the ever institutionalized youth only

Percent time in institutional care	SLC6A4 Correlations						FKBP5 Correlations	
	CpG1	CpG2	CpG3	CpG4	CpG5	CpG6	CpG1	CpG2
Baseline	0.10	0.05	0.05	-0.05	-0.10	-0.08	-0.27*	-0.16
30 months	-0.09	-0.10	.002	-0.09	-0.30**	-0.33**	-0.15	-0.06
42 months	-0.09	0.01	0.02	0.04	-0.18	-0.27*	-0.02	0.003
54 months	-0.09	0.07	0.01	0.09	-0.10	0.20†	0.01	0.02
8 years	-0.04	0.12	-0.01	0.09	-0.08	-0.16	0.02	0.05
12 years	-0.09	0.10	0.03	0.08	-0.08	-0.16	0.01	0.08
Mean (SD)	3.36 (1.47)	1.44 (0.64)	3.30 (1.31)	2.53 (1.09)	1.48 (0.79)	5.78 (1.62)	91.46 (3.57)	83.94 (5.88)
Range	0.78-7.46	0.28-3.67	1.12-7.15	0.83-6.10	0.00-3.64	2.12-9.71	81.47-100.00	69.70-97.50

Note. † $P < .10$ . \* $P < .05$ . \*\* $P < .01$ .

TABLE 4. Regression models for association between percent time in institutional care and two DNA methylation sites in SLC6A4 in the total sample

	SLC6A4 CpG5				SLC6A4 CpG6			
	B (SE)	$\beta$	$R^2$	$\Delta R^2$	B (SE)	$\beta$	$R^2$	$\Delta R^2$
Step 1 (demographic covariates)			0.09†				0.02	
Step 2								
Percent time institutionalized at 30 months	-0.01 (0.002)	-0.35	0.18**	0.09**	-0.02 (.01)	-0.39	0.12*	0.11***
Step 2								
Percent time institutionalized at 42 months	0.01 (0.003)	-0.31	0.16*	0.07*	-0.02 (0.01)	-0.37	0.11*	0.10***
Step 2								
Percent time institutionalized at 54 months	-	-	-	-	-0.02 (0.01)	-0.33	0.10†	0.08***
Step 2								
Percent time institutionalized at 8 years	-	-	-	-	-0.02 (0.01)	-0.27	0.08	0.06*

Note. † $P < .10$ . \* $P < .05$ . \*\* $P < .01$ .

Models shown only for CpG sites that showed significant correlations with percent time in institutional care at each time point. *B* (SE) represents the unstandardized regression coefficient and standard error (e.g., percent change in methylation with each percent increase in time spent institutionalized), and  $\beta$  is the beta coefficient for standardized models (e.g. the number of standard deviation changes in methylation with each standard deviation increase in percent institutionalization).  $\Delta R^2$  represents the proportion of the variation in DNA methylation explained by percent time institutionalized. All models adjusted for age, sex, ethnicity, and pubertal stage.

TABLE 5. Regression models for association between percent time in institutional care and DNA methylation in ever institutionalized youth only

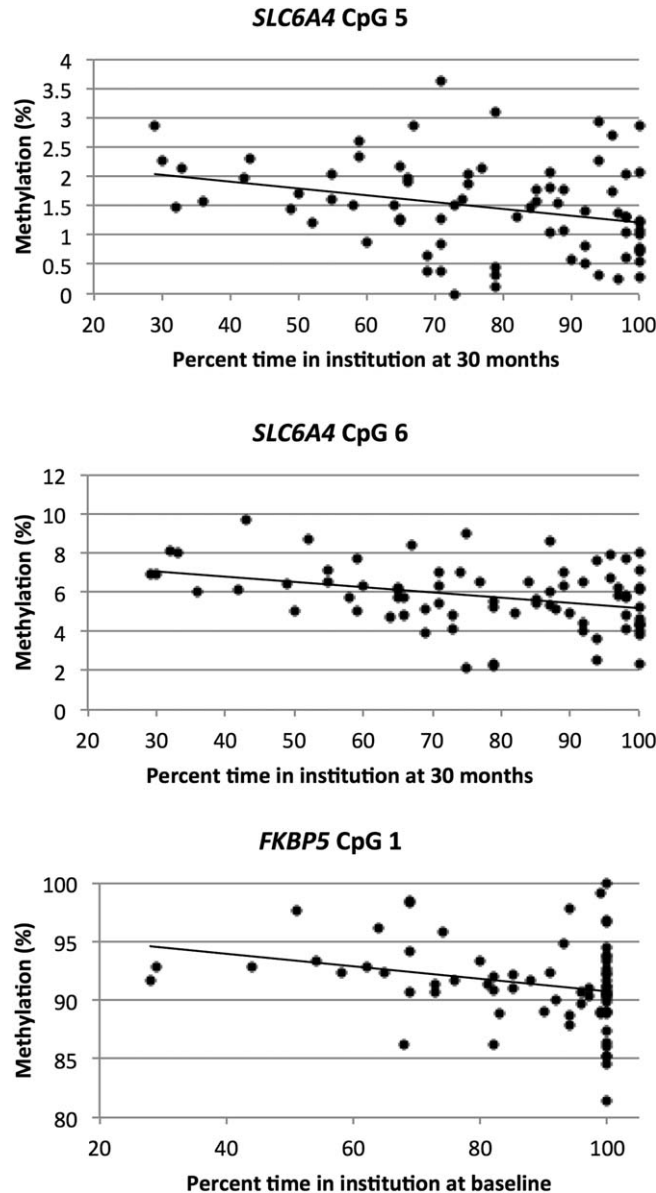
	SLC6A4 CpG5				SLC6A4 CpG6				FKBP5 CpG1			
	B (SE)	$\beta$	$R^2$	$\Delta R^2$	B (SE)	$\beta$	$R^2$	$\Delta R^2$	B (SE)	$\beta$	$R^2$	$\Delta R^2$
Step 1 (demographic covariates)			0.08				0.05				0.06	
Step 2												
Percent time institutionalized at baseline	-	-	-	-	-	-	-	-	-0.05 (0.02)	-0.28	0.14†	0.07*
Step 2												
Percent time institutionalized at 30 months	-00.02 (0.01)	-043	0.22**	0.14***	-0.03 (0.01)	-0.35	0.15†	0.10**	-	-	-	-

Note. \* $P < .05$ . \*\* $P < .01$ . \*\*\* $P < .001$ .

Models shown only for the CpG site that showed significant correlations with percent time in institutional care at each time point. *B* (SE) represents the unstandardized regression coefficient and standard error (e.g., percent change in methylation with each percent increase in time spent institutionalized), and  $\beta$  is the beta coefficient for standardized models (e.g., the number of standard deviation changes in methylation with each standard deviation increase in percent institutionalization). Change in  $R^2$  represents the proportion of the variation in DNA methylation explained by percent time institutionalized. All models adjusted for age, sex, ethnicity, and pubertal stage.

analyses within the ever institutionalized youth only (Table 3). For *SLC6A4*, methylation at CpG5 and CpG6 were both negatively correlated with the proportion of time in institutional care at 30 months, while methylation at CpG6 was also negatively correlated with the proportion of time in institutional care at 42 months. After

Bonferroni correction for all CpG sites tested within this gene, methylation at both CpG5 and CpG6 remained significantly correlated with proportion of time in institutional care at 30 months. For *FKBP5*, a significant negative correlation was found between methylation at CpG1 with proportion of time in institutional care at



**Fig. 1.** Relationship between proportion of time in institutional care and methylation level among children who had ever spent time in the institution (EIG) for CpG sites with significant associations in *SLC6A4* and *FKBP5*.

baseline, which remained significant after adjusting for Bonferroni correction.

### Hierarchical linear regressions

**Regressions within the total sample.** Next, we examined whether the associations in the total sample that were significant after multiple correction adjustment remained significant with the inclusion of demographic covariates. Regressions using the total sample were conducted only for CpG sites within *SLC6A4*, as no correlations with sites in *FKBP5* passed the multiple testing correction. Specifically, age at DNA collection, sex, ethnicity, and pubertal stage were examined along with proportion of time in institutional care in relation to DNA methylation at CpG sites 5 and 6 of *SLC6A4* (Table 4). In the model including only the demographic covariates, CpG5 methylation was significantly posi-

tively associated with age ( $t(100)=2.19, P=.031, \beta=0.21$ ), and marginally negatively associated with pubertal stage ( $t(100)=-1.87, P=.065, \beta=-0.19$ ). The association of sex or ethnicity with methylation was not significant. Importantly, the negative association between proportion of time in institutional care and DNA methylation at CpG5 remained significant following adjustment for covariates. In the model including demographic covariates for CpG6, there was no significant association between any of the covariates and methylation. Again, the negative association between proportion of time in institutional care at all time points and DNA methylation at CpG6 remained significant following adjustment for covariates. While the effect size for each 1% increase in time spent in institutional care was very small at both sites of *SLC6A4* (1–2% lower methylation), this effect would be amplified when considering longer periods of time spent in institutional care. For example, a

child with a 10% increase in total institutional care, (i.e. 1.2 additional years in care), would predict a 10–20% decrease in methylation. Further, when added to the regression models, time spent in institutional care at 30 months predicted an additional 9% and 11% of the variance in methylation, respectively for CpG sites 5 and 6.

### Regression analyses within ever institutionalized youth only

In order to determine if the amount of time spent institutionalized affects the results within only the EIG, we conducted the regression analyses for methylation at *SLC6A4* and *FKBP5* in EIG only (Table 5). With the smaller sample, there was a reduction in the number of significant associations found between proportion of time in institutional care and methylation for *SLC6A4*. Proportion of time in institutional care at 30 months, but not at other time points, remained a significant predictor of reduced methylation at both CpG5 and CpG6 of *SLC6A4*. In addition, the association between proportion of time in institutional care at baseline and CpG1 in *FKBP5* was significant among institutionalized youth only. The relationship between institutional care and methylation level at these CpG sites is presented in Figure 1. In the model of methylation at *SLC6A4* with just demographic covariates included, only pubertal stage was significantly associated with methylation at CpG5 ( $t(66) = -2.20$ ,  $P = .031$ ,  $\beta = -0.27$ ), whereas no covariates were significantly associated with methylation at CpG6. In the model for *FKBP5* with just demographic covariates included, pubertal stage was marginally associated with methylation at CpG1 ( $t(62) = -1.95$ ,  $P = .056$ ,  $\beta = -0.24$ ).

## DISCUSSION

This is the first study, to our knowledge, to demonstrate the lasting impact of exposure to early institutional care on DNA methylation in two genes related to the stress response systems—*SLC6A4* and *FKBP5*. In both genes, increased proportion of time spent in institutional care across early development was associated with lower DNA methylation at age 12. These associations remained significant after adjusting for covariates of age, sex, ethnicity, and pubertal stage. These results are consistent with other findings at age 12 in these youth including alterations of cortisol reactivity (McLaughlin et al., 2015), and increased risk in psychopathology (Humphreys et al., 2015), suggesting a lasting cross-domain impact of institutional rearing that begins at the cellular level and is also found in physiologic and behavioral outcomes. Our findings of persistent changes in methylation in key regulatory regions of genes associated with the HPA axis and psychopathology following adverse early life experiences suggest that altered methylation is reflective of similar biological pathways and that together, they contribute to the elevated and persistent risk for psychopathology within these individuals.

### Timing of exposure

The longitudinal design of the BEIP study enables the unique examination of whether developmental differences exist in relation to the amount of institutional care and methylation at age 12. For *FKBP5*, the strongest associations were found with proportion of time in institutional care at baseline, when children were on average

22 months of age. The importance of early rather than later exposure to institutional rearing for *FKBP5* is generally consistent with prior studies of this gene, where an association was found between methylation at *FKBP5* and child abuse, but not later life trauma (Klengel et al., 2013). In contrast, the strongest associations with *SLC6A4* were at later the time points 30, 42, 54 months, and 8 years, a finding somewhat consistent with our previous findings in which 5httlpr genotype was a significant predictor of disinhibited social behavior at 30 months of age and later (Drury et al., 2012a,b). Other studies of methylation in this gene also found timing-specific effects; e.g. Devlin et al. (2010) reported decreased methylation in the same region specifically at the 2nd trimester of pregnancy, but not at earlier or later periods of pregnancy.

The different patterns of associations between the two genes tested suggest important developmental differences and hint at the possibility of gene-specific sensitive periods during which environmental exposures, such as caregiving, may have important lasting effects on DNA methylation. This finding of varied timing of effects across the genes is consistent with previous genetic studies with the BEIP where differential associations with genetic variants and outcomes were found for *BDNF* and *SLC6A4* (Drury et al., 2012a). In that study, the impact of a genotype within *SLC6A4* was greatest between baseline and 42 months of age, while the impact of a genotype in *BDNF* was more apparent at later time points. A significant timing effect has also been identified for *FKBP5* mRNA expression in the prefrontal cortex, which has been shown to increase expression in adolescence and peak in adulthood, suggesting that childhood and adolescence may be particularly vulnerable periods for stress exposures, before *FKBP5* may be able to fully regulate the activity of the glucocorticoid receptor (Weickert et al., 2016). Longitudinal studies, ideally with DNA methylation, genotype, and gene expression levels, measured at multiple time points, are needed to determine the specific role of each gene within each developmental period, and how methylation and expression patterns may change across time both in response to different environmental exposures and developmentally.

### Direction and magnitude of effects

The small magnitude of the effect of institutionalization on methylation identified in both genes is similar to that reported in some prior studies, though the direction of the effect varies across studies. Specifically, one study examined DNA methylation at other CpG sites within *FKBP5* in relation to prenatal stress exposures, such as chronic stress and war trauma in the Congo (Kertes et al., 2016). This study found higher methylation at one CpG site (cg03546163) in *FKBP5* in placenta and cord blood. While this was the opposite direction of the effect identified in our study, this difference could be explained by the fact that they were examining a different CpG site in different tissues. In other research, the direction of effect was consistent with our study, such that early childhood trauma was found to be associated with an average of 12.5% lower DNA methylation in blood cells across three CpG sites in intron 7 of *FKBP5*, two of which were the same sites assayed in this study (Klengel et al., 2013). Interestingly, genotype appeared to moderate this effect in their study such that individuals

who were carriers of the A allele (rs1360780) and exposed to childhood trauma had lower methylation than those without the A allele with or without childhood trauma. Because of these findings, we subsequently tested whether *FKBP5* genotype moderated our findings. However we did not detect any effect moderation by genotype (data not shown). While our sample represented a typical distribution of alleles (GG,  $n = 71$ ; GA,  $n = 33$ ; AA,  $n = 9$ ) relative to other European populations (dbSNP, 2016), it is possible we were unable to detect this interaction effect because of our small sample size.

For *SLC6A4*, prior studies have also shown conflicting directions of effect in response to childhood adversity. Decreased methylation was found in this same gene region in newborn children exposed to prenatal maternal depression, consistent with our current findings (Devlin et al., 2010). However, in a separate study, 10-year old children exposed to bullying were found to have increased buccal cell methylation (Ouellet-Morin et al., 2013). These differences in direction of effect between studies could be because of differences in the developmental stage at which methylation was determined, duration, or nature of exposures, and the source tissue of DNA used for methylation analyses (Lupien et al., 2009).

Our results differ somewhat from the findings of the only previous study of methylation in children with a history of institutional care (Naumova et al., 2012). In their study, genome-wide analysis did not detect significant differences in DNA methylation obtained from peripheral blood at either *FKBP5* or *SLC6A4* in institutionalized children. However the 27K Illumina array only assays two sites in each of these genes, neither of which match the specific sites assayed in this study. In the study by Naumova and colleagues, a large number of sites throughout the genome were identified with differential methylation, the majority of which indicated increased methylation in children with a history of institutionalized caregiving. However, 11% of the sites demonstrated hypomethylation in institutionalized children suggesting that the relationship between early negative caregiving environments and methylation is unlikely to be unidirectional across the genome: some genes may be hypomethylated while others will be hypermethylated, a pattern consistent with primate studies (Provencal et al., 2012).

#### Potential implications for expression and health

Given the small magnitude of methylation differences we detected, and the complexity of relationship between methylation and expression, we cannot infer how these differences will impact lifetime health. It is important to note that the CpG sites demonstrating significant differences were located within transcription factor binding sites, suggesting a likely role in affecting gene expression levels. Specifically, CpG 5 and 6 in *SLC6A4* are located within the binding site for the transcription factor EZH2 and CpG 1 and 2 in *FKBP5* are located within the binding site for the transcription factor NR3C1 (Supporting Information Fig. 1). Furthermore, the two sites assayed in *FKBP5* lie within a glucocorticoid response element within an enhancer region in intron 7, which loops around to directly interact with the transcription start site of this gene (Klengel et al., 2013). Larger sample sizes are needed to definitively test causal pathways of methylation on downstream physiologic and behav-

ioral outcomes. The effect of small changes in single genes on complex physiologic processes and developmental psychopathology is expected to be small. As such, repeated measures with longitudinal data are likely required to detect the direct functional impact, particularly in studies such as the BEIP where a significant number of biological and behavioral differences have already been identified as a consequence of early experiences. It is of interest to note that an earlier study of the BEIP demonstrated that children who remained in institutional care exhibited blunted cortisol responses to psychosocial stress compared with children randomized to foster care (McLaughlin et al., 2015). In a similar study, children adopted from institutions or foster care exhibited a less steep diurnal cortisol pattern compared to nonadopted peers, and this blunted diurnal pattern was associated with increased behavioral problems two years after adoption (Koss et al., 2014). While we cannot link the DNA methylation differences in this study to cortisol differences directly, as these effects are likely a result of more than just methylation changes at single sites, taken together these studies support the hypothesis that institutional care results in functional differences in stress response systems that are persistent and likely linked to epigenetic alterations in the genes known to regulate them. Studies that combine methylation, gene expression, genotype, and specific physiologic outcomes, such as cortisol reactivity or vagal tone, represent novel future approaches capable of specifically addressing mechanistic pathways.

#### Strengths and limitations

Several limitations should be noted. First, our study could not assess the role of prenatal exposures or parental care prior to institutionalization. Second, any analysis of DNA methylation in buccal samples cannot necessarily be generalized to other tissues of interest, such as neural tissues, where methylation patterns may differ. Although buccal swabs comprise primarily epithelial cells, derived from neuroectodermal tissue similar to neuronal cells, some amount of white blood cells may also be collected which may or may not have similar methylation pattern within an individual. Further, a recent genome-wide analysis of samples from dozens of different somatic tissue types identified DNA methylation patterns in buccal samples to more closely cluster with patterns in all other tissue types than did blood samples, suggesting buccal cell methylation may be more representative of other tissues, including brain, than methylation obtained from DNA in peripheral blood (Lowe et al., 2013). Unfortunately, sufficient DNA is not available at this time from multiple earlier time points to enable longitudinal analyses of methylation. Future studies are needed to address this issue, ideally using samples that examine the trajectory across different peripheral and central sources. Despite this limitation, the consistency of the association with varying measurements of the proportion of time a child spent in institutional care hints at the existence of gene-specific sensitive periods. Finally, despite a relatively small sample size, our study is strengthened by the well characterized, prospective measurement of exposure to institutional care.

The strength of this study lies in the uniqueness of the randomized controlled study design, minimizing the risk of confounding by factors that putatively could



influence initial placement in institutional care or subsequent placement into foster care. Further, the longitudinal design permits comparison of the portion of life spent institutionalized across different developmental time points, which revealed both a lasting effect of institutionalization on methylation at both genes as well as putative timing-specific effects. Our decision to test for methylation differences at these specific sites was based on the existing data demonstrating well-characterized effects on stress-response systems for both genes and interactions across a range of different studies with early life adversity. Particularly with limited subject numbers, targeted gene analyses supported by molecular studies and neuroscience, minimize the potential for false positive findings, an issue particularly relevant to genome wide studies that fail to leverage the substantial existing neurobiologically-informed research related to the impact of early adversity. Future studies that examine methylation in additional candidate genes involved in stress-response systems, such as the gene that encodes the glucocorticoid receptor (*NR3C1*), or the corticotrophin hormone receptors (*CRHR1*, *CRHR2*) would be of interest (Palma-Gudiel et al., 2015; Todkar et al., 2015). In studies with larger sample sizes, potential interactions between these candidate genes could also be tested, to determine if methylation states across these genes contribute to any long term psychological or biological outcomes.

While evidence is rapidly accumulating that early life social adversity has profound effects across biological systems, more research is needed to determine the molecular pathways through which these changes occur and the mechanisms underlying the persistence of these effects. Our findings demonstrate an epigenetic path through which early adversity influences DNA methylation within regulatory regions of two well-characterized stress-related genes. These findings have implications for less extreme examples of social deprivation, such as adverse and toxic environments outside of institutions, in which altered methylation at these genes may serve as objective biomarkers of exposure and potential indicators of elevated future risk. With further research on functional consequences of these methylation differences, these findings may ultimately help predict lifetime development of psychopathology in children exposed to early adversity.

#### ACKNOWLEDGMENTS

The authors thank the many families and children who participated in this project. The authors also thank Sanaber Ismaily for assistance in processing the genetic samples. This work was supported by the Robert Wood Johnson Health and Society Scholars Program, Harvard School of Public Health (ALN), the Vanderbilt Undergraduate Research Supervision Grant (ALN), the John D. and Catherine T. MacArthur Foundation (Research Network on Early Experience and Brain Development, CAN), the Binder Family Foundation (CAN), NIMH R01 MH MH-10-010 (CAN), and R21 MH094688-01 (SSD). AN and SD conceptualized the study, analyzed the data, wrote and edited the article. KH assisted with analytic design, analyzed the data, assisted with manuscript preparation, and edited the article. AN, BH, AC generated the DNA methylation data and edited the article, and KE extracted DNA and edited the article.

#### LITERATURE CITED

- Database of Single Nucleotide Polymorphisms (dbSNP). Bethesda, MD: National Center for Biotechnology Information, National Library of Medicine. dbSNP accession: rs1360785. Available from: <http://www.ncbi.nlm.nih.gov/SNP>.
- Bateson P, Barker D, Clutton-Brock T, Deb D, D'Udine B, Foley RA, Gluckman P, Godfrey K, Kirkwood T, Lahr MM, McNamara J, Metcalfe NB, Monaghan P, Spencer HG, Sultan SE. 2004. Developmental plasticity and human health. *Nature* 430:419–421.
- Beach SR, Brody GH, Todorov AA, Gunter TD, Philibert RA. 2010. Methylation at SLC6A4 is linked to family history of child abuse: an examination of the Iowa Adoptee sample. *Am J Med Genet B Neuropsychiatr Genet* 153B:710–713.
- Beach SR, Brody GH, Todorov AA, Gunter TD, Philibert RA. 2011. Methylation at 5HTT mediates the impact of child sex abuse on women's antisocial behavior: an examination of the Iowa adoptee sample. *Psychosom Med* 73:83–87.
- Binder EB. 2009. The role of FKBP5, a co-chaperone of the glucocorticoid receptor in the pathogenesis and therapy of affective and anxiety disorders. *Psychoneuroendocrinology* 34(suppl1): S186–195.
- Bogdan R, Agrawal A, Gaffrey MS, Tillman R, Luby JL. 2014. Serotonin transporter-linked polymorphic region (5-HTTLPR) genotype and stressful life events interact to predict preschool-onset depression: a replication and developmental extension. *J Child Psychol Psychiatry* 55:448–457.
- Buchmann AF, Holz N, Boecker R, Blomeyer D, Rietschel M, Witt SH, Schmidt MH, Esser G, Banaschewski T, Brandeis D, Zimmermann US, Laucht M. 2014. Moderating role of FKBP5 genotype in the impact of childhood adversity on cortisol stress response during adulthood. *Eur Neuropsychopharmacol* 24:837–845.
- Dayer A. 2014. Serotonin-related pathways and developmental plasticity: relevance for psychiatric disorders. *Dialogues Clin Neurosci* 16:29–41.
- Devlin AM, Brain U, Austin J, Oberlander TF. 2010. Prenatal exposure to maternal depressed mood and the MTHFR C677T variant affect SLC6A4 methylation in infants at birth. *PLoS One* 5:e12201.
- Drury SS, Gleason MM, Theall KP, Smyke AT, Nelson CA, Fox NA, Zeanah CH. 2012a. Genetic sensitivity to the caregiving context: the influence of 5httlpr and BDNF val66met on indiscriminate social behavior. *Physiol Behav* 106:728–735.
- Drury SS, Theall K, Gleason MM, Smyke AT, De Vivo I, Wong JY, Fox NA, Zeanah CH, Nelson CA. 2012b. Telomere length and early severe social deprivation: linking early adversity and cellular aging. *Mol Psychiatry* 17:719–727.
- Duman EA, Canli T. 2015. Influence of life stress, 5-HTTLPR genotype, and SLC6A4 methylation on gene expression and stress response in healthy Caucasian males. *Biol Mood Anxiety Disord* 5:2.
- Foley DL, Craig JM, Morley R, Olsson CA, Dwyer T, Smith K, Saffery R. 2009. Prospects for epigenetic epidemiology. *Am J Epidemiol* 169:389–400.
- Fox NA, Almas AN, Degnan KA, Nelson CA, Zeanah CH. 2011. The effects of severe psychosocial deprivation and foster care intervention on cognitive development at 8 years of age: findings from the Bucharest Early Intervention Project. *J Child Psychol Psychiatry* 52:919–928.
- Galobardes B, Smith GD, Lynch JW. 2006. Systematic review of the influence of childhood socioeconomic circumstances on risk for cardiovascular disease in adulthood. *Ann Epidemiol* 16:91–104.
- Hertzman C. 1999. The biological embedding of early experience and its effects on health in adulthood. *Ann N Y Acad Sci* 896: 85–95.
- Humphreys KL, Gleason MM, Drury SS, Miron D, Nelson CA, 3rd, Fox NA, Zeanah CH. 2015. Effects of institutional rearing and foster care on psychopathology at age 12 years in Romania: follow-up of an open, randomised controlled trial. *Lancet Psychiatry* 2:625–634.

- Jans LA, Riedel WJ, Markus CR, Blokland A. 2007. Serotonergic vulnerability and depression: assumptions, experimental evidence and implications. *Mol Psychiatry* 12:522–543.
- Jawahar MC, Murgatroyd C, Harrison EL, Baune BT. 2015. Epigenetic alterations following early postnatal stress: a review on novel aetiological mechanisms of common psychiatric disorders. *Clin Epigenetics* 7:122
- Karg K, Burmeister M, Shedden K, Sen S. 2011. The serotonin transporter promoter variant (5-HTTLPR), stress, and depression meta-analysis revisited: evidence of genetic moderation. *Arch Gen Psychiatry* 68:444–454.
- Kertes DA, Kamin HS, Hughes DA, Rodney NC, Bhatt S, Mulligan CJ. 2016. Prenatal maternal stress predicts methylation of genes regulating the hypothalamic-pituitary-adrenocortical system in mothers and newborns in the Democratic Republic of Congo. *Child Dev* 87:61–72.
- Kinnally EL, Capitanio JP, Leibel R, Deng L, LeDuc C, Haghighi F, Mann JJ. 2010. Epigenetic regulation of serotonin transporter expression and behavior in infant rhesus macaques. *Genes Brain Behav* 9:575–582.
- Klengel T, Mehta D, Anacker C, Rex-Haffner M, Pruessner JC, Pariante CM, Pace TW, Mercer KB, Mayberg HS, Bradley B, Nemeroff CB, Holsboer F, Heim CM, Ressler KJ, Rein T, Binder EB. 2013. Allele-specific FKBP5 DNA demethylation mediates gene-childhood trauma interactions. *Nat Neurosci* 16:33–41.
- Koss KJ, Hostinar CE, Donzella B, Gunnar MR. 2014. Social deprivation and the HPA axis in early development. *Psychoneuroendocrinology* 50:1–13.
- Kuzawa CW, Sweet E. 2009. Epigenetics and the embodiment of race: developmental origins of US racial disparities in cardiovascular health. *Am J Hum Biol* 21:2–15.
- Lowe R, Gemma C, Beyan H, Hawa MI, Bazeos A, Leslie RD, Montpetit A, Rakyan VK, Ramagopalan SV. 2013. Buccals are likely to be a more informative surrogate tissue than blood for epigenome-wide association studies. *Epigenetics* 8:445–454.
- Lupien SJ, McEwen BS, Gunnar MR, Heim C. 2009. Effects of stress throughout the lifespan on the brain, behaviour and cognition. *Nat Rev Neurosci* 10:434–445.
- Marshall WA, Tanner JM. 1969. Variations in pattern of pubertal changes in girls. *Arch Dis Child* 44:291–303.
- Marshall WA, Tanner JM. 1970. Variations in the pattern of pubertal changes in boys. *Arch Dis Child* 45:13–23.
- McLaughlin KA, Fox NA, Zeanah CH, Nelson CA. 2011. Adverse rearing environments and neural development in children: the development of frontal electroencephalogram asymmetry. *Biol Psychiatry* 70:1008–1015.
- McLaughlin KA, Sheridan MA, Tibu F, Fox NA, Zeanah CH, Nelson CA. 3rd. 2015. Causal effects of the early caregiving environment on development of stress response systems in children. *Proc Natl Acad Sci U S A* 112:5637–5642.
- Naumova OY, Lee M, Kuposov R, Szyf M, Dozier M, Grigorenko EL. 2012. Differential patterns of whole-genome DNA methylation in institutionalized children and children raised by their biological parents. *Dev Psychopathol* 24:143–155.
- Nelson CA, 3rd, Zeanah CH, Fox NA, Marshall PJ, Smyke AT, Guthrie D. 2007. Cognitive recovery in socially deprived young children: the Bucharest early intervention project. *Science* 318:1937–1940.
- Nelson CA, Fox NA, and Zeanah CH. 2014. Romania's abandoned children: deprivation, brain development, and the struggle for recovery. Cambridge, Massachusetts: Harvard University Press. 402 p.
- Ouellet-Morin I, Wong CC, Danese A, Pariante CM, Papadopoulos AS, Mill J, Arseneault L. 2013. Increased serotonin transporter gene (SERT) DNA methylation is associated with bullying victimization and blunted cortisol response to stress in childhood: a longitudinal study of discordant monozygotic twins. *Psychol Med* 43:1813–1823.
- Palma-Gudiel H, Córdova-Palomera A, Leza JC, Fañanas L. 2015. Glucocorticoid receptor gene (NR3C1) methylation processes as mediators of early adversity in stress-related disorders causality: A critical review. *Neurosci Biobehav Rev* 55: 520–535.
- Phillips NK, Hammen CL, Brennan PA, Najman JM, Bor W. 2005. Early adversity and the prospective prediction of depressive and anxiety disorders in adolescents. *J Abnorm Child Psychol* 33:13–24.
- Pollak SD, Nelson CA, Schlaak MF, Roeber BJ, Wewerka SS, Wiik KL, Frenn KA, Loman MM, Gunnar MR. 2010. Neurodevelopmental effects of early deprivation in postinstitutionalized children. *Child Dev* 81:224–236.
- Provencal N, Suderman MJ, Guillemin C, Massart R, Ruggiero A, Wang D, Bennett AJ, Pierre PJ, Friedman DP, Cote SM, Hallett M, Tremblay RE, Suomi SJ, Szyf M. 2012. The signature of maternal rearing in the methylome in rhesus macaque prefrontal cortex and T cells. *J Neurosci* 32:15626–15642.
- Slopen N, Koenen KC, Kubzansky LD. 2012. Childhood adversity and immune and inflammatory biomarkers associated with cardiovascular risk in youth: a systematic review. *Brain Behav Immun* 26:239–250.
- Smyke AT, Zeanah CH, Fox NA, Nelson CA, Guthrie D. 2010. Placement in foster care enhances quality of attachment among young institutionalized children. *Child Dev* 81:212–223.
- Struber N, Struber D, Roth G. 2014. Impact of early adversity on glucocorticoid regulation and later mental disorders. *Neurosci Biobehav Rev* 38:17–37.
- Todkar A, Granholm L, Aljumah M, Nilsson KW, Comasco E, Nylander I. 2015. HPA axis gene expression and DNA methylation profiles in rats exposed to early life stress, adult voluntary ethanol drinking and single housing. *Front Mol Neurosci* 8:90.
- Turecki G, Meaney MJ. 2014. Effects of the social environment and stress on glucocorticoid receptor gene methylation: a systematic review. *Biol Psychiatry* 79:87–96.
- Tyrka AR, Ridout KK, Parade SH, Paquette A, Marsit CJ, Seifer R. 2015. Childhood maltreatment and methylation of FK506 binding protein 5 gene (FKBP5). *Dev Psychopathol* 27: 1637–1645.
- van der Knaap LJ, Riese H, Hudziak JJ, Verbiest MM, Verhulst FC, Oldehinkel AJ, van Oort FV. 2015. Adverse life events and allele-specific methylation of the serotonin transporter gene (SLC6A4) in adolescents: the TRAILS study. *Psychosom Med* 77:246–255.
- Weaver IC, Cervoni N, Champagne FA, D'Alessio AC, Sharma S, Seckl JR, Dymov S, Szyf M, Meaney MJ. 2004. Epigenetic programming by maternal behavior. *Nat Neurosci* 7:847–854.
- Weickert CS, Webster MJ, Boerrieger D, Sinclair D. 2016. FKBP5 messenger RNA increases after adolescence in human dorsolateral prefrontal cortex. *Biol Psychiatry* e1–e3.
- Yehuda R, Daskalakis NP, Bierer LM, Bader HN, Klengel T, Holsboer F, Binder EB. 2015. Holocaust Exposure Induced Intergenerational Effects on FKBP5 Methylation. *Biol Psychiatry*
- Zeanah CH, Fox NA, Nelson CA. 2012. The Bucharest early intervention project: case study in the ethics of mental health research. *J Nerv Ment Dis* 200:243–247.
- Zeanah CH, Nelson CA, Fox NA, Smyke AT, Marshall P, Parker SW, Koga S. 2003. Designing research to study the effects of institutionalization on brain and behavioral development: the Bucharest Early Intervention Project. *Dev Psychopathol* 15: 885–907.
- Zhang TY, Hellstrom IC, Bagot RC, Wen X, Diorio J, Meaney MJ. 2010. Maternal care and DNA methylation of a glutamic acid decarboxylase 1 promoter in rat hippocampus. *J Neurosci* 30:13130–13137.